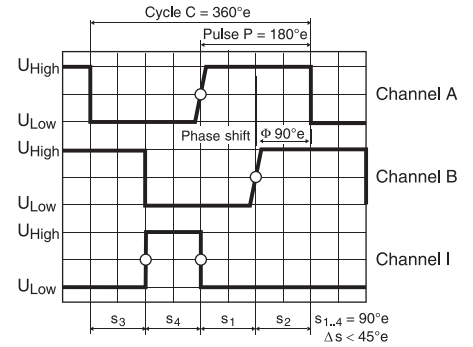
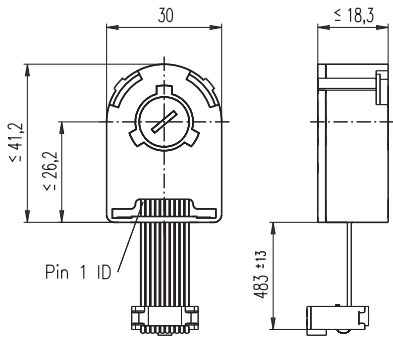


Encoder HEDL 5540, 500 CPT, 3 Channels, with Line Driver RS 422



- Stock program
- Standard program
- Special program (on request)

Order Number

110512	110514	110516
--------	--------	--------

Type	110512	110514	110516
Counts per turn	500	500	500
Number of channels	3	3	3
Max. operating frequency (kHz)	100	100	100
Max. speed (rpm)	12000	12000	12000
Shaft diameter (mm)	3	4	6

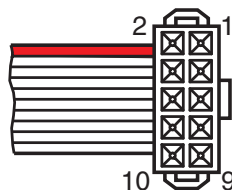
maxon Modular System

+ Motor	Page	+ Gearhead	Page	+ Brake	Page	Overall length [mm] / • see Gearhead
RE 25	77/79					75.3
RE 25	77/79	GP 26 / GP 32	230/232			•
RE 25	77/79	KD 32, 1.0 - 4.5 Nm	238			•
RE 25	77/79	GP 32, 0.75 - 6.0 Nm	233/235			•
RE 25	77/79	GP 32 S	251-253			•
RE 25, 20 W	79			AB 28	316	105.7
RE 25, 20 W	79	GP 26 / GP 32	230/232	AB 28	316	•
RE 25, 20 W	79	KD 32, 1.0 - 4.5 Nm	238	AB 28	316	•
RE 25, 20 W	79	GP 32, 0.75 - 6.0 Nm	233/235	AB 28	316	•
RE 25, 20 W	79	GP 32 S	251-253	AB 28	316	•
RE 35, 90 W	81					91.7
RE 35, 90 W	81	GP 32, 0.75 - 4.5 Nm	232			•
RE 35, 90 W	81	GP 32, 0.75 - 6.0 Nm	234/235			•
RE 35, 90 W	81	GP 32, 4.0 - 8.0 Nm	237			•
RE 35, 90 W	81	GP 42, 3.0 - 15 Nm	240			•
RE 35, 90 W	81	GP 32 S	251-253			•
RE 35, 90 W	81			AB 28	316	124.1
RE 35, 90 W	81	GP 32, 0.75 - 4.5 Nm	232	AB 28	316	•
RE 35, 90 W	81	GP 32, 0.75 - 6.0 Nm	234/235	AB 28	316	•
RE 35, 90 W	81	GP 42, 3.0 - 15 Nm	240	AB 28	316	•
RE 35, 90 W	81	GP 32 S	251-253	AB 28	316	•
RE 35, 90 W	81	GP 32, 4.0 - 8.0 Nm	237	AB 28	316	•
RE 40, 150 W	82					91.7
RE 40, 150 W	82	GP 42, 3.0 - 15 Nm	240			•
RE 40, 150 W	82	GP 52, 4.0 - 30 Nm	243			•
RE 40, 150 W	82			AB 28	316	124.2
RE 40, 150 W	82	GP 42, 3.0 - 15 Nm	240	AB 28	316	•
RE 40, 150 W	82	GP 52, 4.0 - 30 Nm	243	AB 28	316	•
A-max 26	106-112					63.5
A-max 26	106-112	GP 26, GS 30	230/231			•
A-max 26	106-112	GP 32, 0.4 - 2.0 Nm	234			•
A-max 26	106-112	GP 32, 0.75 - 6.0 Nm	233/236			•
A-max 26	106-112	GS 38, 0.1 - 0.6 Nm	239			•
A-max 26	106-112	GP 32 S	251-253			•
A-max 32	114/116					82.3
A-max 32	114/116	GP 32, 0.75 - 6.0 Nm	234/236			•
A-max 32	114/116	GS 38, 0.1 - 0.6 Nm	239			•
A-max 32	114/116	GP 32 S	251-253			•

Technical Data

Supply voltage	5 V ± 10 %
Output signal driver used:	EIA Standard RS 422 DS26LS31
Phase shift Φ	90°e ± 45°e
Signal rise time (typically, at $C_L = 25$ pF, $R_L = 2.7$ k Ω , 25°C)	180 ns
Signal fall time (typically, at $C_L = 25$ pF, $R_L = 2.7$ k Ω , 25°C)	40 ns
Index pulse width	90°e
Operating temperature range	0 ... +70°C
Operating temperature range optional	-40 ... +100°C
Moment of inertia of code wheel	≤ 0.6 gcm ²
Max. angular acceleration	250 000 rad s ⁻²
Output current per channel	min. -20 mA, max. 20 mA
Option	1000 counts per turn, 2 channels

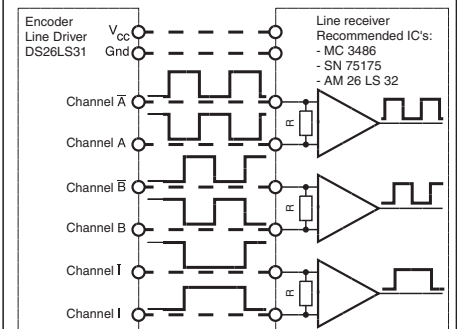
Pin Allocation



- 1 N.C.
- 2 V_{CC}
- 3 GND
- 4 N.C.
- 5 Channel \bar{A}
- 6 Channel A
- 7 Channel \bar{B}
- 8 Channel B
- 9 Channel \bar{I} (Index)
- 10 Channel I (Index)

Pin type Berg 246770
flat band cable AWG 28

Connection example



Terminal resistance R = typical 100 Ω

May 2009 edition / subject to change